

PRIMINER



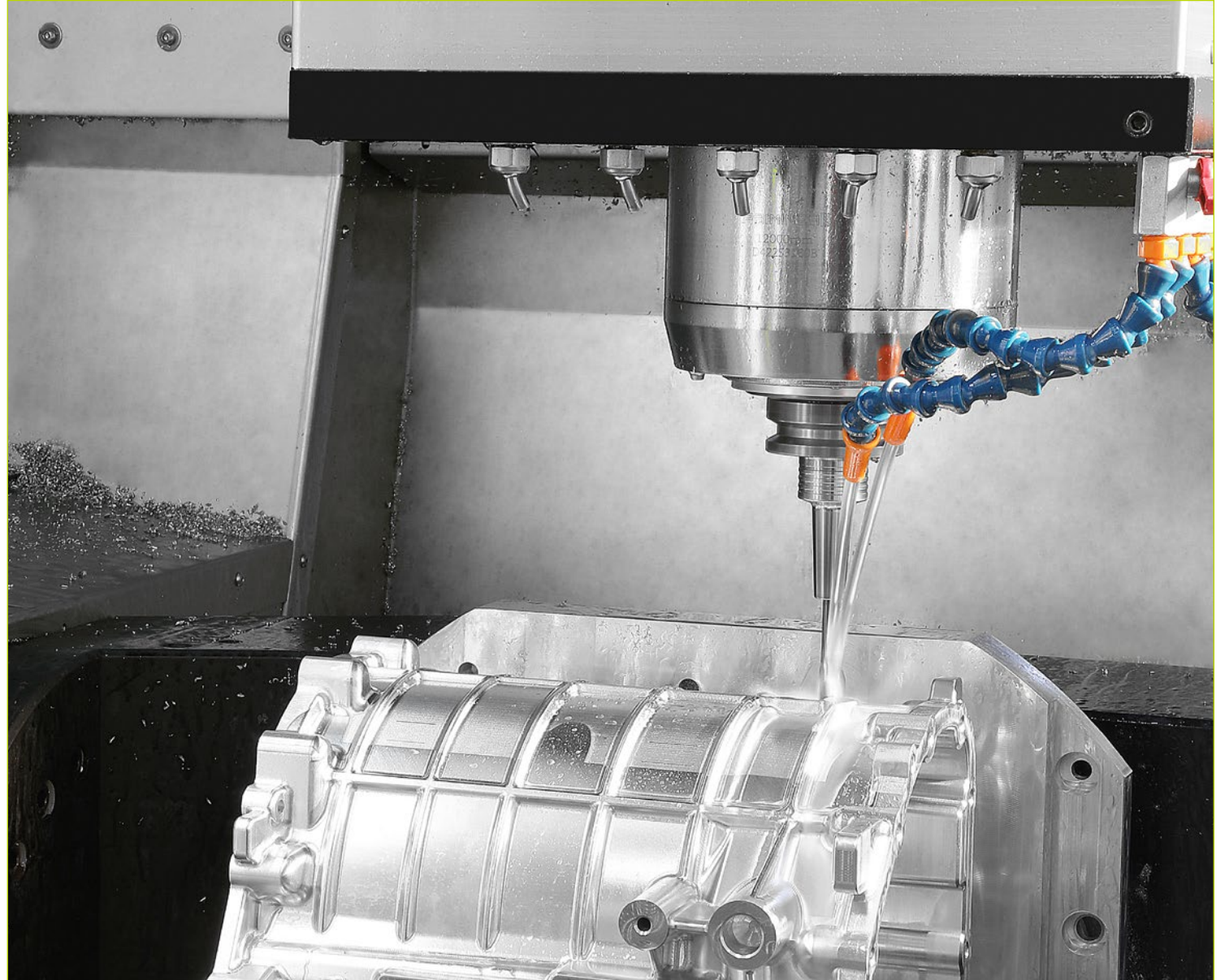
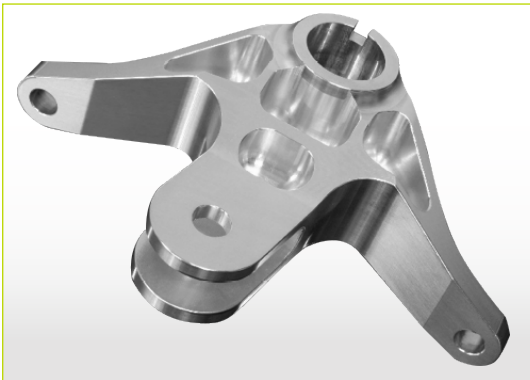
C500-5X

5 Axis Machining Center

High rigidity, High efficiency



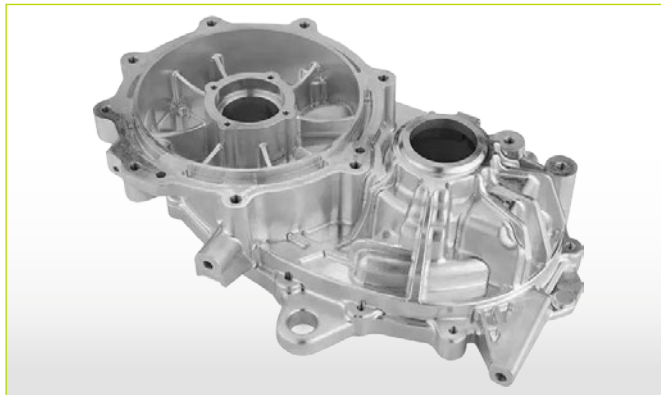
APPLICATIONS



- Die casting
- Medical

- Structural components
- Mould parts

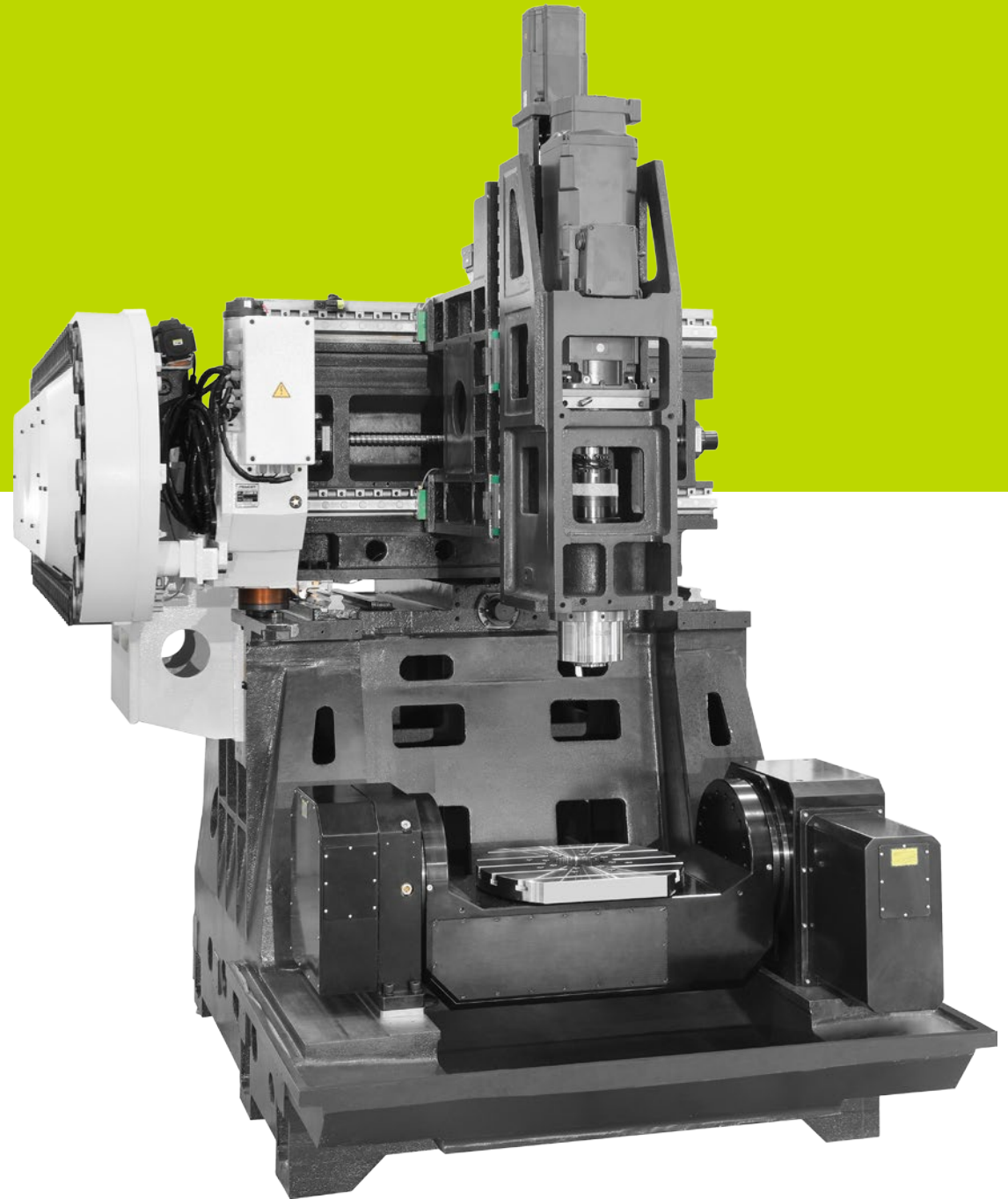
- Tooling
- Aerospace



C500-5X

Cost-effective entry into the 5 -sided and 5 axis simultaneous machining

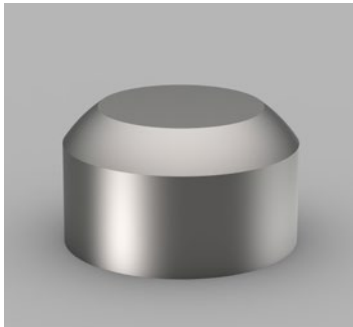
- X/Y/Z axis movement are separated from the machining area
- Dual-support rotary table, high rigidity, high performance and efficiency
- A/C axis with roller gear cam drive
- X/Y/Z axis optional with direct measuring system
- A/C axis standard with rotary encoder



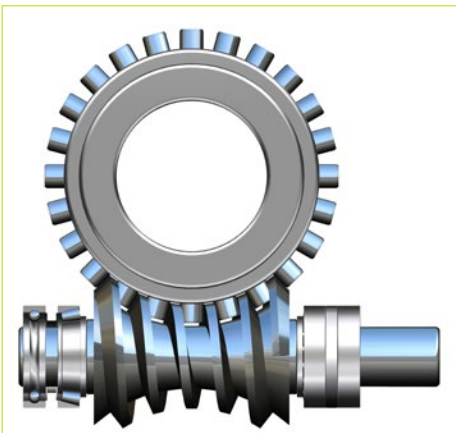
A/C AXIS WITH ROLLER GEAR CAM DRIVE

- Roller gear cam drive rotary table
- A/C axis rotation speed 50/60 rpm
- A axis travel +30°~ -120°
- C axis travel 360°

Machining dimensions



- Max. workpiece diameter 700 mm
- Max. workpiece height 500 mm
- Max. workpiece weight 300 kg
- Table size $\Phi 500 \times 400$ mm



CHAIN TYPE TOOL CHANGER



- Tools can be loaded and unloaded while machining
- User-Friendly interface make the loading and unloading of the tools easier
- High production efficiency

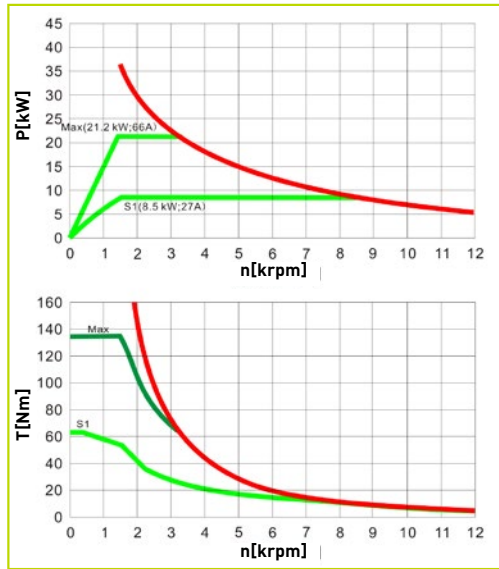
Technical Specification:

- 60 pockets
- Max.tool length 300 mm
- Max.tool diameter $\Phi 80/\Phi 125\text{mm}$
- Max.tool weight 8 kg

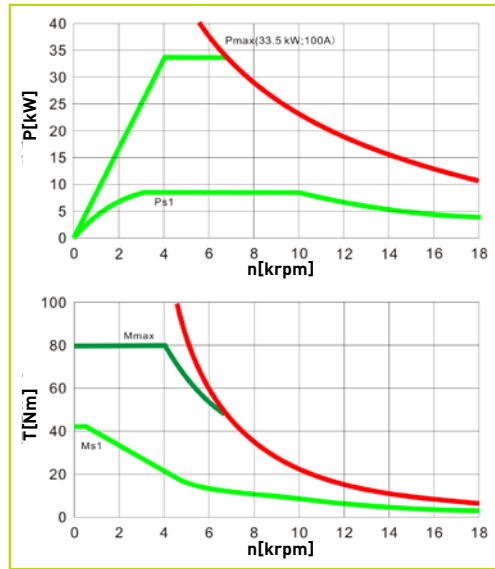


HIGH-PERFORMANCE SPINDLE

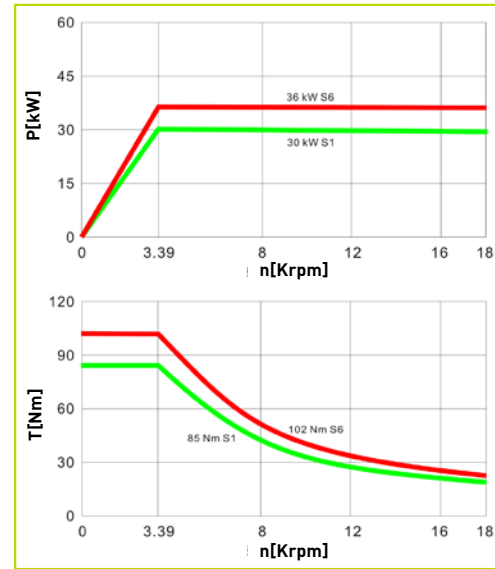
Power and torque diagram



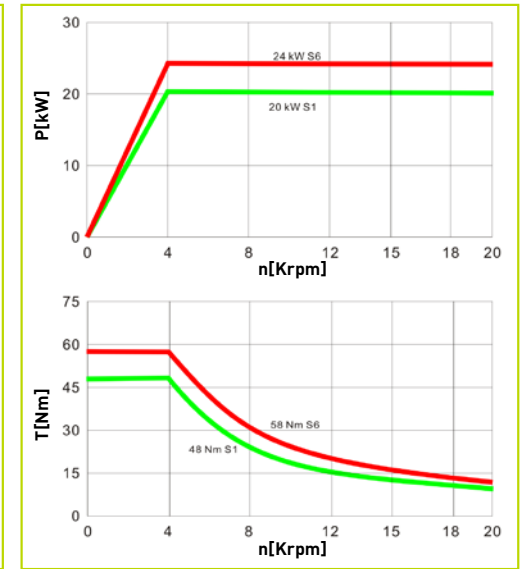
Y connection 12000 rpm
8.5/21.2 kW 63/135 Nm



△ connection 18000 rpm
8.5/33.5kW 42/80Nm



HSK A63 • 18000 rpm
30/36 kW 85/102 Nm



HSK A63 • 20000 rpm
20/24 kW 48/58 Nm

HSK A63 • 15000 rpm



HEIDENHAIN TNC 640

The TNC contouring control for milling and milling-turning machines

Key features:

Intelligent-Dynamic Precision Machining

- ✓ Dynamic Collision Monitoring (DCM)
- ✓ Dynamic Efficiency
- ✓ Active Chatter Control (ACC)
- ✓ Adaptive feed control (AFC)
- ✓ Machine any contour slot with trochoidal milling

Fast and reliable machining at high contour fidelity

- ✓ Optimal tool guidance by the TNC 640

Programming, Editing, Testing and Automated machining

- ✓ A full range of possibilities with the TNC 640
- ✓ Graphical support in any scenario
- ✓ Straightforward function keys for complex contours
- ✓ Programming free contours and Data Matrix codes
- ✓ Easy calibration of rotary axes with KinematicsOpt

Tool measurement and Workpiece measurement

- ✓ Measuring length, radius, and wear inside the machine
- ✓ Setup, preset setting, and measuring with touch trigger probes
- ✓ Machining and measuring 3-D contours
- ✓ The TNC 640 makes setup easy

Open to outside information

- ✓ Processing CAD files with the TNC 640
- ✓ The TNC 640 programming station
- ✓ Uniformly digital job management with Connected Machining
- ✓ Machining and measuring 3-D contours
- ✓ The TNC 640 makes setup easy

SIEMENS SINUMERIK ONE

Platforms and digitalization drive innovations

Key features:

- Reduction of time to market
- Further individualization in mechanical engineering
- High quality and best possible availability
- Defined precision and increased productivity
- Safety of man and machine and security of individual property in the digital age
- High-performance processor and communication technologies
- Scalable intelligent control and drive technology
- Best safety and security standards
- Innovative digital engineering

An integrated solution along the entire value chain raises new potentials for machine builders and users

- The digital native CNC
- Development from VIRTUAL to REAL
- Scalable in VIRTUAL and REAL
- Intelligent and highly productive
- Digital Transformation of machine tools
- Maximize productivity
- Innovate faster
- Excite digitalization
- Discover a new way of thinking

Platforms and digitalization drive innovations

- Top Speed plus
- Intelligent Load Control
- Intelligent Dynamic Control
- Interpolation turning
- Configured stop
- Angle head adapter
- Identify tool demand



SIEMENS SINUMERIK 828D

The perfect solution for all performance classes

New Panel Processing Unit

- ✓ Higher processor performance
- ✓ Digital Input with higher voltage stability
- ✓ 1GB Ethernet interface X130
- ✓ Pull-relief for the DRIVE-CLiQ and PN cables
- ✓ More robust touch-operation 15,6" PPU290.4

Features for milling Cogging torque compensation and 2nd channel for milling

- ✓ System integrated function
 - Drive-based function SINAMICS
- ✓ Automatic measure of the cogging torque
- ✓ Pre-control of periodic repetitive torque ripple
- ✓ Function available for rotative-, linear- and torque motors
- ✓ 2nd Channel Milling
 - For both machining and handling & robot purpose

Nodding Compensation ECO/Advanced and Advanced Position Control ECO

- ✓ Intelligent control based compensation
 - New developed compensation algorithm
- ✓ System integrated function
 - As a CNC and HMI feature
- ✓ Scalable function in 3 steps
 - ECO
 - Advanced
 - Compile Cycle
- ✓ Commissioning support with HMI masks
 - Additional input mask from SINUMERIK Operate

Higher speed, more accurate for the entry level

Tool Ident Connection

Jerk Adaption

Top Speed plus

Intelligent Load Control (ILC)

Intelligent Dynamic Control (IDC)



Standard configuration

- Roller gear cam drive rotary table
- Full enclosed splash guard
- Direct drive spindle 15000rpm HSK A63
- 60 pockets chain type tool changer
- Chain type chip conveyor
- Spindle oil cooler
- Rotary encoder on A/C axis
- Air-conditioned electrical cabinet
- Rigid tapping
- Ethernet, CF card and USB interface
- Automatic lubrication system
- Coolant system
- Air blast during cutting
- LED working lamp
- End of program light
- Electrical handwheel (MGP)
- Tool box
- Leveling bolts and blocks
- Coolant gun
- Air gun
- User manual

Optional configuration

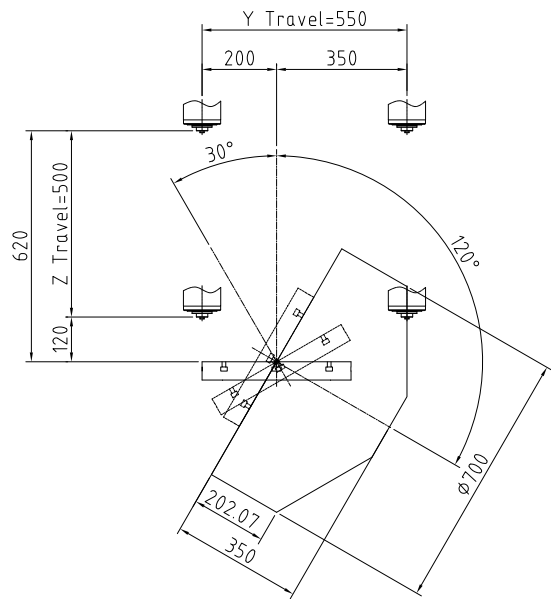
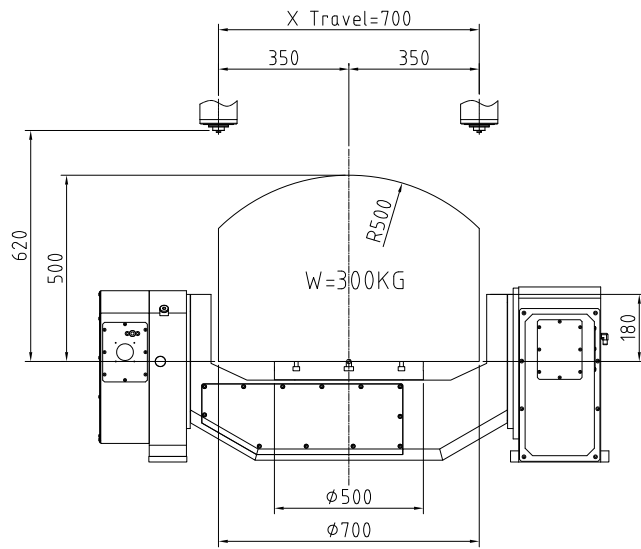
- Built-in spindle 18000rpm HSK A63, 30/36kW_85/102Nm
- Built-in spindle 20000rpm HSK A63, 20/24kW_48/58Nm
- Linear scales on X/Y/Z axis
- CTS Coolant Through Spindle + ATS
- Workpiece probe
- Tool probe
- Oil mist collector
- Oil skimmer
- Dynamic Collision Monitoring (DCM)
- Kinematics
- Extra 200GB SSD program memory

Technical Specifications

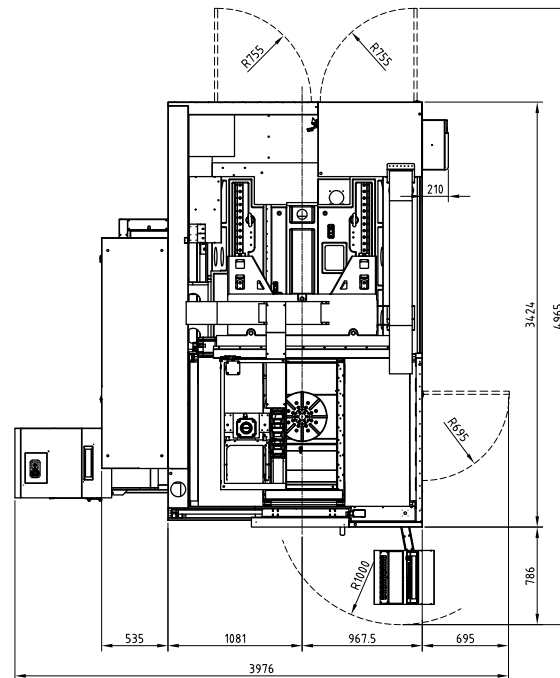
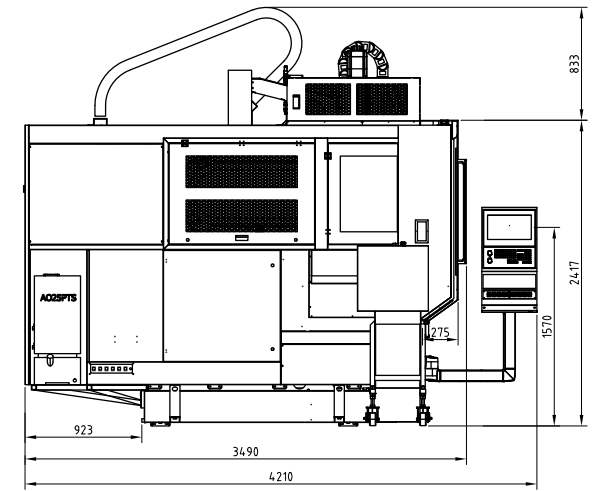
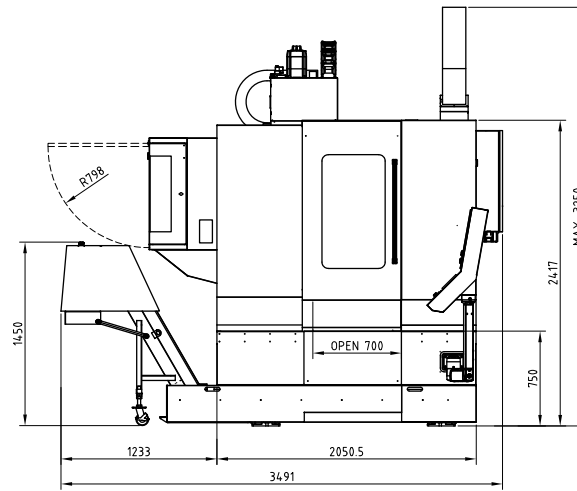
| Table | |
|------------------------------------|------------------------|
| Max. workpiece diameter | Φ700 mm |
| Table size | Φ500×400 mm |
| T-slot (width x number x distance) | 14 mm×5 mm×80 |
| Max. load | 300 kg |
| Travel | |
| X/Y/Z Travel | 700 / 550 / 500 mm |
| A/C Travel | +30°~-120°/360° |
| Spindle nose to table | 120-620 mm |
| Spindle | |
| Spindle taper | HSK A63, 15000 rpm |
| Spindle motor power | 8.5/33.5 kW, 63/135 Nm |
| Feed | |
| Rapid feed X/Y/Z | 48 m/min |
| Rotation speed A/C | 50 / 60 rpm |
| Cutting speed | 1-12000 mm/min |

| Tool changer | |
|---|----------------------------------|
| Number of tools | 60 pcs |
| Max. tool length | 300 mm |
| Max. tool diameter | Φ 80 / Φ 125 mm |
| Max. tool weight | 8 kg |
| Accuracy(VDI 3441 Full travel) | |
| Positioning accuracy X/Y/Z axis (Without linear scales) | 0.008 (X/Y/Z) 10/8 arc-sec (A/C) |
| Repeatability accuracy X/Y/Z axis (Without linear scales) | 0.006 (X/Y/Z) 8/6 arc-sec (A/C) |
| Positioning accuracy X/Y/Z axis (With linear scales) | 0.006 (X/Y/Z) 10/8 arc-sec (A/C) |
| Repeatability accuracy X/Y/Z axis (With linear scales) | 0.004 (X/Y/Z) 8/6 arc-sec (A/C) |
| Dimensions & Weight | |
| Dimensions | 3976×4965×3250 mm |
| Weight | 9500 kg |

CUTTING AREA



DIMENSIONS







IMINER Global TEAM

PRIMINER Solutions



hyperMILL

DIJET NS TOOL

SolidCAM
The Leaders in Integrated CAM

GÜHRING



PL LEHMANN®



HAIMER.



SCHUNK



Blaser.
SWISSLUBE



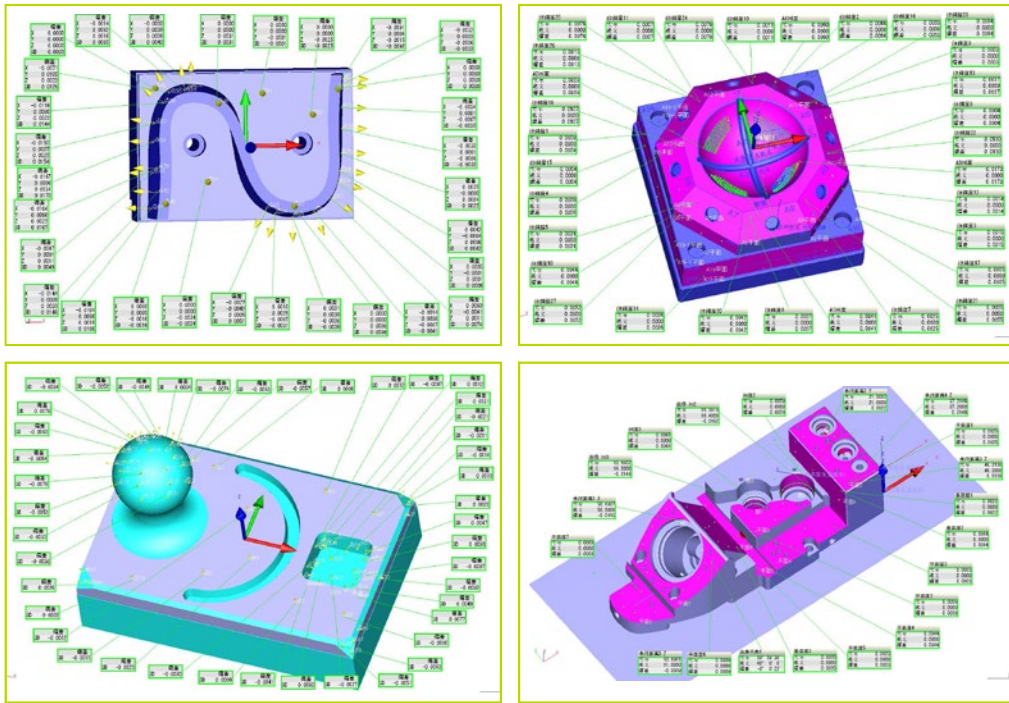
REGO-FIX



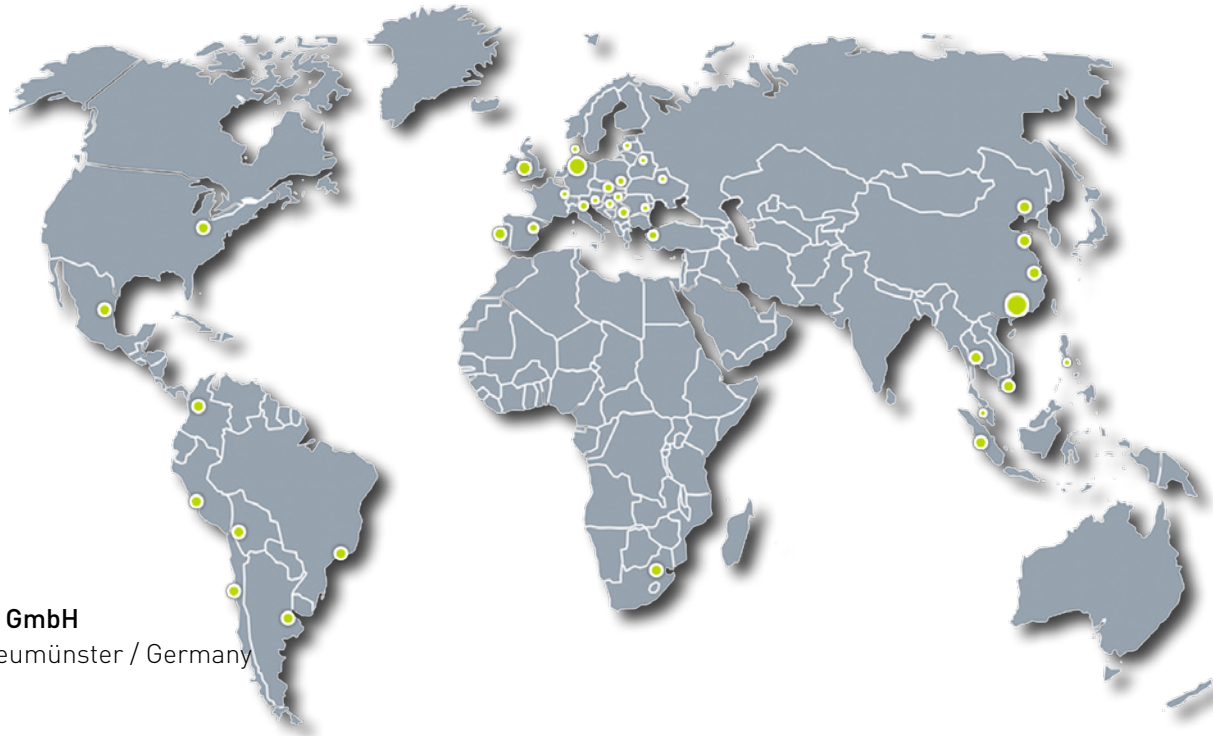
BLUM
focus on productivity



Workpiece measuring by CMM



PRIMINER



PRIMINER Werkzeugmaschinen GmbH

Tungendorfer Str.10 · D-24536 Neumünster / Germany
Tel: +49 (0) 4321-53 9946 -0
Fax: +49 (0) 4321-25 2003 -90
E-mail: info@priminer.de

PRIMINER SOUTH EAST EUROPE · PRIMINER d.o.o. BEOGRAD

Vladimira Popovica 38-40 · GTC - 11070 Beograd / Srbija
Tel: +381 69 702 705
Fax: +381 11 715 69 00
E-mail: office@priminer.de

PRIMINER MACHINE TOOLS DONGGUAN CO., LTD

XinRuYi Industrial Park, Fuxing Road, Xingguang Village, Huangjiang Town, Dongguan, P.R.China
Tel: +86 769 838 490 61
Fax: +86 769 838 490 62
E-mail: sales@priminer.de

www.priminer.de